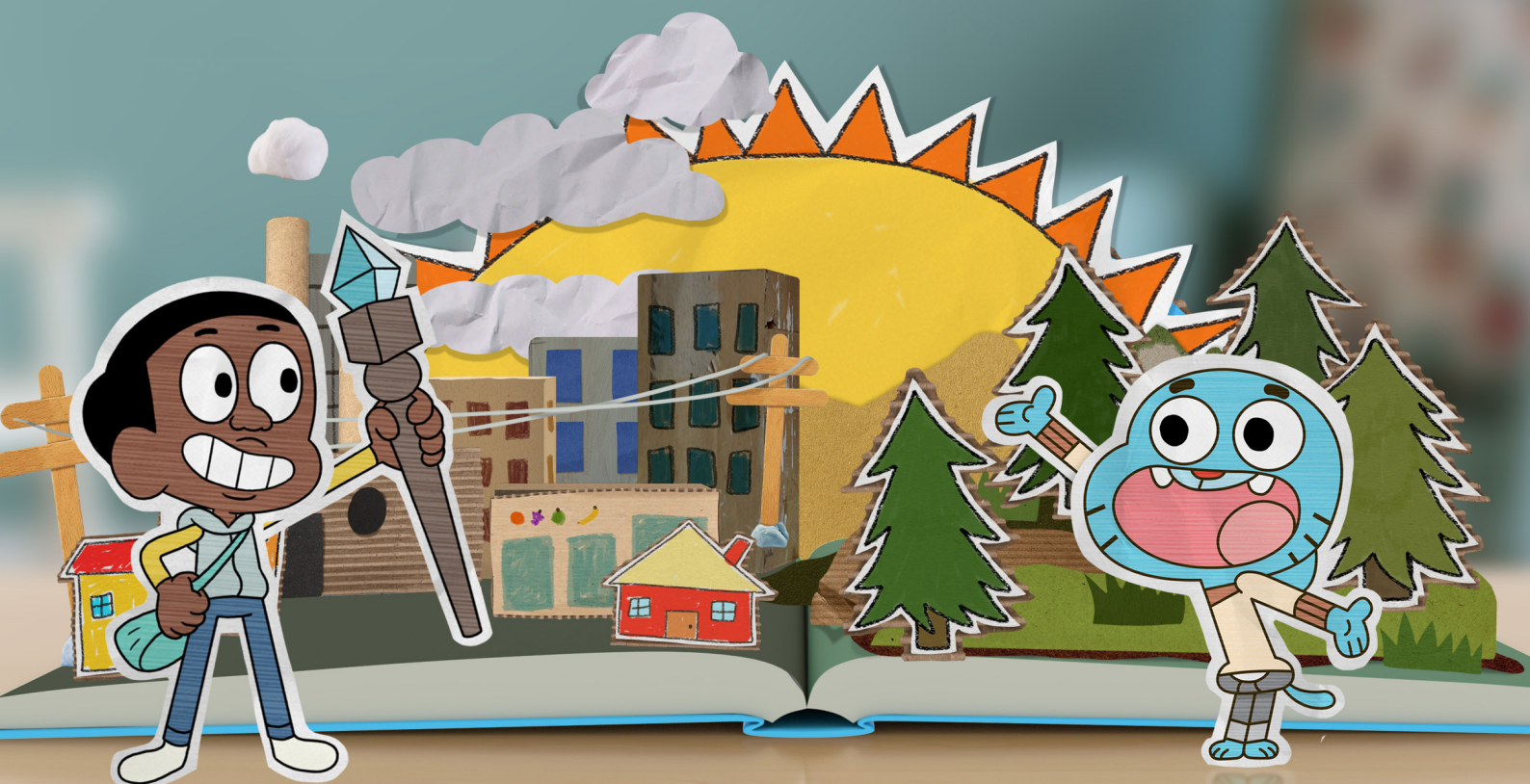




## COMPETITION GUIDE





## CARTOON NETWORK CLIMATE CHAMPIONS COMPETITION ENTRY FORM

### THE CARTOON NETWORK CLIMATE CHAMPIONS COMPETITION; YOUR OPPORTUNITY TO WIN A FANTASTIC PRIZE!

Well done! You've worked hard in your role as a Cartoon Network Climate Champion.

You've learned about climate change issues, you've potentially helped bees and butterflies by planting seeds, and you've done your best to spread the message about helping nature.

Cartoon Network Climate Champions are proud of you!

**Thank you!** There's no better way of rewarding you for all your hard work than by offering you the opportunity to win a fantastic prize by entering the Cartoon Network Climate Champions Competition.

You are going to enjoy this!

#### THE PRIZE:

The winning competition entry will receive £500 towards a school garden and 30 Cartoon Network Climate Champions goodie bags for the winner and their class!!

#### HOW TO ENTER:

All you have to do to be in with a chance of winning your brilliant prize is to:

- Design a bee, butterfly and/or insect hotel - also known as The Cartoon Network Climate Champions Bug Hotel.

#### SUGGESTIONS TO HELP YOU CREATE A BRILLIANT COMPETITION ENTRY:

- First of all, study various designs for bug hotels.
- Then, think of ways of making YOUR bug hotel different!
- Maybe you'll come up with a radical new approach to Bug Hotel design.
- Or you might design it to have bright external bee and butterfly-friendly colours.

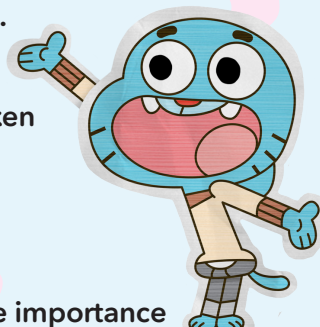
- Maybe you'll embellish the outside walls with friendly, welcoming words and phrases so bees, bugs and other insects will be buzzing straight towards the Bug Hotel entrance lobby.
- You'll need to describe the different materials you would use to make the hotel.
- The judges will also want to know the dimensions of the structure.
- And make sure the materials are environmentally friendly.
- You can annotate your design to explain specific, noteworthy features.

#### JUDGING CRITERIA:

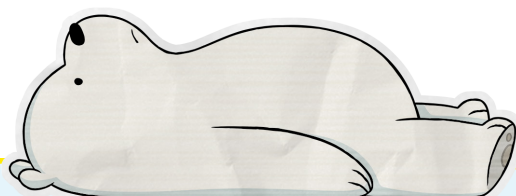
The following factors will be taken into consideration:

- Effort.
- Originality.
- Presentation.
- Evidence of awareness of the importance of being a Cartoon Network Climate Champion.

**DON'T FORGET THE DEADLINE AND GOOD LUCK!**



# CREATE YOUR CARTOON NETWORK CLIMATE CHAMPIONS BUG HOTEL HERE!!!



Use this space for your notes and explanations of special Cartoon Network Climate Champions Bug Hotel design features

Please tell us...

Your name: \_\_\_\_\_ Your age: \_\_\_\_\_

Your teacher's name: \_\_\_\_\_

Your school address: \_\_\_\_\_

Your school contact number: \_\_\_\_\_

Your parent/guardian/authorised adult's signature: \_\_\_\_\_

**Competition closing date:** Friday March 31st 2023

**Post entries to:** SUPER. Competitions. Cartoon Network Climate Champions, PO BOX 1573, Kingston Upon Thames, KT1 9DG.

\*For full terms and conditions, go to [www.cartoonnetworkacademy.co.uk](http://www.cartoonnetworkacademy.co.uk)